

### Conservation Tracking for the Sonoma-Marin Saving Water Partnership

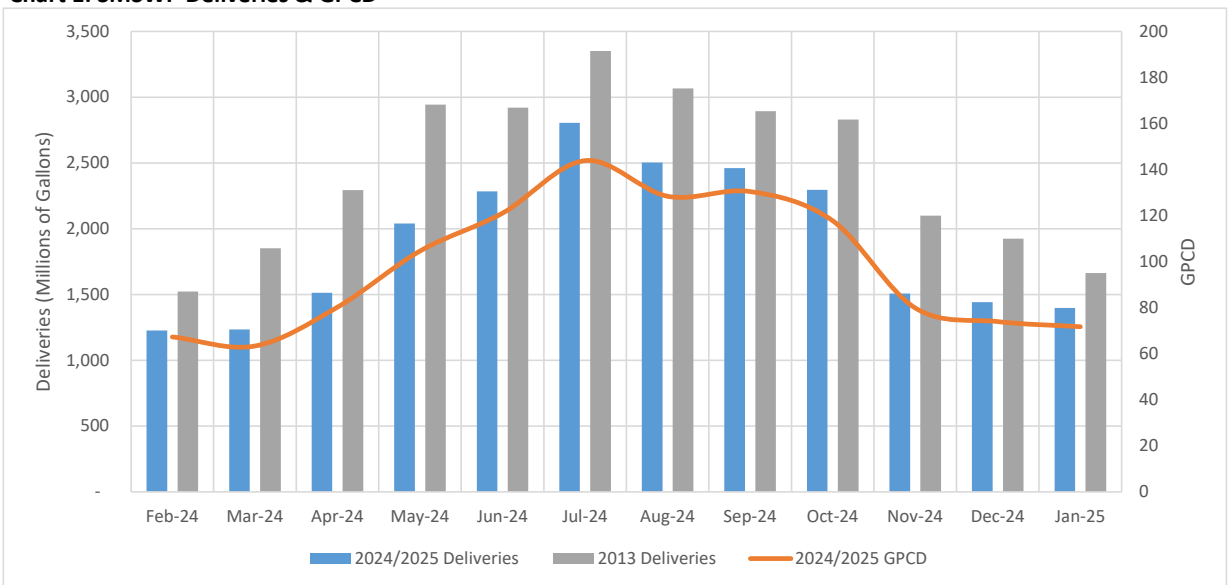
**Table 1: January 2025 Water Usage**

Water Retailer	Total Deliveries (Gallons)	2013 Benchmark (Gallons)	Relative to 2013 Benchmark
Cal Am	15,792,000	17,542,000	-10%
Cotati	16,201,710	20,365,688	-20%
Healdsburg	31,407,000	33,969,000	-8%
Marin Municipal	442,430,712	505,656,244	-13%
North Marin	139,089,652	151,000,000	-8%
Petaluma	147,863,429	172,545,662	-14%
Rohnert Park	101,337,999	111,000,000	-9%
Santa Rosa	346,456,188	438,665,146	-21%
Sonoma	31,715,860	58,783,597	-46%
Valley of the Moon	49,014,801	56,870,850	-14%
Windsor	53,945,317	64,575,281	-16%
Cloverdale	23,693,000	32,129,000	-26%
<b>SMSWP Total</b>	<b>1,398,947,668</b>	<b>1,663,102,468</b>	<b>-16%</b>

**Table 2: 2025 Year to Date Water Usage**

Water Retailer	Total Deliveries (Gallons)	2013 Benchmark (Gallons)	Relative to 2013 Benchmark
Cal Am	15,792,000	17,542,000	-10%
Cotati	16,201,710	20,365,688	-20%
Healdsburg	31,407,000	33,969,000	-8%
Marin Municipal	442,430,712	505,656,244	-13%
North Marin	139,089,652	151,000,000	-8%
Petaluma	147,863,429	172,545,662	-14%
Rohnert Park	101,337,999	111,000,000	-9%
Santa Rosa	346,456,188	438,665,146	-21%
Sonoma	31,715,860	58,783,597	-46%
Valley of the Moon	49,014,801	56,870,850	-14%
Windsor	53,945,317	64,575,281	-16%
Cloverdale	23,693,000	32,129,000	-26%
<b>SMSWP Total</b>	<b>1,398,947,668</b>	<b>1,663,102,468</b>	<b>-16%</b>

**Chart 1: SMSWP Deliveries & GPCD**



**2013 Benchmark:** 2013 was selected as the benchmark per Executive Order B-40-17, which continues the reporting requirements established in Executive Order B-29-15.

Chart 2: SMSWP Gallons Per Capita Per Day Time Series

